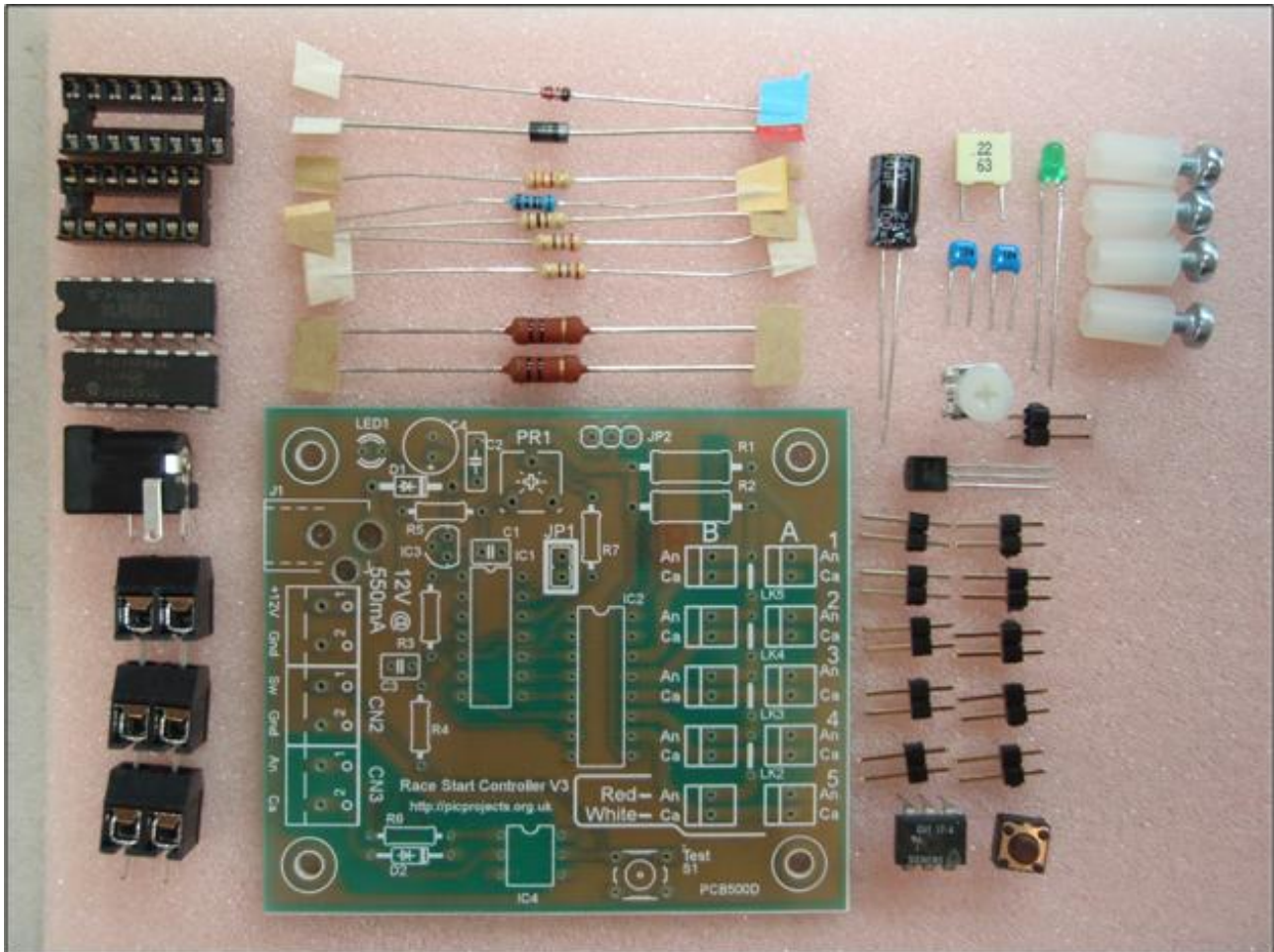


Race Start Controller

<http://picprojects.org.uk>



Parts included in the kit

Qty	Resistors	Qty	Connectors
2	10R 2 watt 5% (R1, R2)	11	2 pin header
1	3K3 0.25 watt 5% (R3)	1	DC jack 2.1mm
1	120R 0.25 watt 5% (R4)	3	2-way terminal block
2	270R 0.25 watt 5% (R5, R7)	1	14 pin DIL socket (for IC1)
1	470R 0.6 watt 2% (R6)	1	16 pin DIL socket (for IC2)
1	10K 6mm cermet pot (PR1)		
	Capacitors		Miscellaneous
2	100nF multilayer ceramic (C1, C3)	1	6mm tactile switch
1	220nF polyester (C2)	4	10mm nylon spacer
1	100uF / 25 volt electrolytic (C4)	4	M3 x 6mm screw
	Semiconductors	1	PCB500D
1	1N5817 (D1)		
1	1N4148 (D2)		
1	LED 3mm green (LED1)		
1	PIC16F684 pre-programmed (IC1)		
1	ULN2003A darlington driver (IC2)		
1	78L05 voltage regulator (IC3)		
1	CNY17 opto-coupler (IC4)		